

# GINGERLILY



*Baie de Sucre*

BEQUIA - GRENADINES - CARIBBEAN









## Gingerlily

There is no where in the world that compares to a Ridge Top Villa at Baie De Sucre. The land was exclusively selected to create only a few of the most high end villas in the world. Our very first recently completed Villa, Gingerlily has been designed for the most discerning clientele. The extraordinary beauty of the elevated vantage point, with views North to St Vincent and South to Mustique and Canouan are unparalleled.







## Gingerlily

This magnificent contemporary house, is composed on two levels, with an open living space on the first level, and bespoke glass doors which fully open to take advantage of the commanding sea views and gentle cooling tradewinds. There is a fully fitted bar with wine storage/cooler and ice maker. The swimming pool extends from here out to a decked area. There is a large dining room with french doors opening to a covered terrace, and outdoor dining area with views to Port Elizabeth and St Vincent.

Directly adjoining the dining area is a bespoke fully fitted and equipped kitchen, with Miele appliances throughout and a Sub Zero fridge/freezer. Next to this is a modern Media Room with Plasma Cable TV and WiFi and a south facing terrace. An internal speaker system is wired throughout the main living areas and pool area.

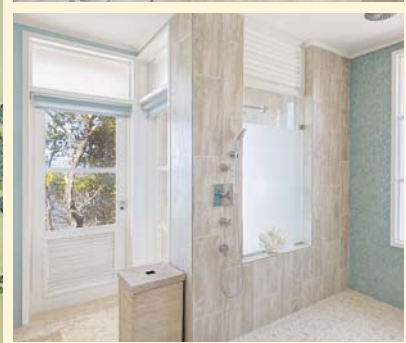
There are three bedrooms on the first level, the master bedroom suite and two family suites. All bathrooms have Hansgrohe fittings.

The main entrance terrace has a plunge pool with a twin external staircase leading to the ground level, The ground floor level comprises of two bedroom suites with their own terraces. There is a number of service rooms including a laundry, larder, plant room and storage room. The garden is fully landscaped with tropical flowers and trees and large grassed areas. There is a large gazebo perched on the hill for spectacular views and afternoon tea or evening cocktails.

There is a secure gated entry to the Villa and to the resort of Baie de Sucre.











#### THE ISLAND & RESORT FACILITIES

The tiny island of Bequia, has a unique, magical charm that is hard to find anywhere else in the Caribbean. With fewer than 6,000 inhabitants, it instantly feels like home. Friendliness is the watchword; the pace is relaxed. Don't be surprised if you are greeted with a warm hello. Bequians have been eagerly welcoming visitors to their shores for generations.

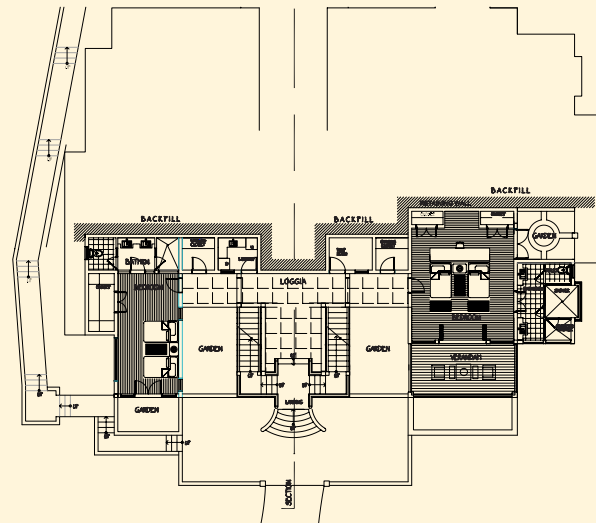
Bequia fulfils many dreams of the perfect small Caribbean island: beautiful sandy beaches, lush green hillsides, attractive little villages, intimate guest houses, hardly any traffic, and places in which to find that perfect solitude.



The Baie de Sucre resort will offer the ultimate in luxury accommodation and hospitality services. Comprising of just 39 one and two bedroom Beach Cottages, 6 Beach Villas and a very select number of four or five-bedroom Ridge and Ridge Top Villas.

In addition to a stunning beach with glorious conditions for swimming and snorkelling, there will be a unique Island Beach Restaurant and Bar, Tennis Courts, Boutique Spa and Pool with Beachfront Terrace.

The Grenadines is one of the best places in the world to enjoy sailing and Baie de Sucre is an ideal base for exploring the surrounding water or enjoying day trips to nearby islands of Mustique, the Tobago Cays, Mayreau, Canouan and Petit St Vincent.



GINGERLILY GROUND FLOOR PLAN

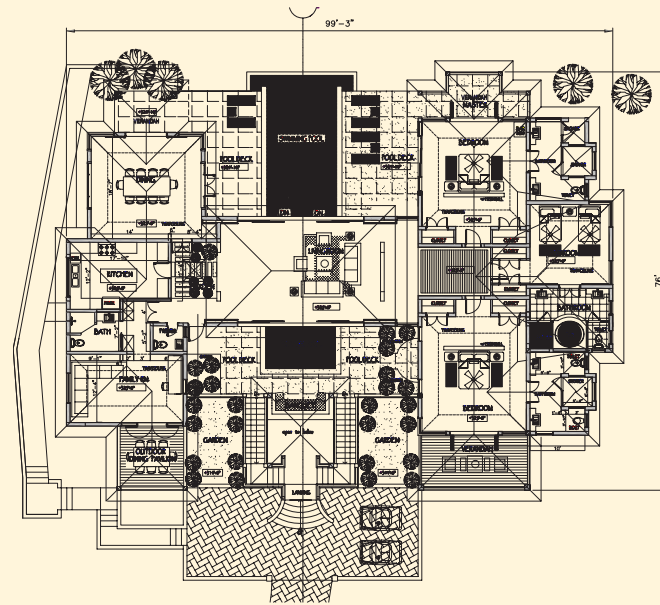
#### SERVICES

- Mains Electricity UK 240V and US 220V plug points
- Cable TV and WiFi, surround sound speaker system
- Private water supply with water tanks and treatment
- Irrigation system for landscaping
- Air Conditioning

#### IMPORTANT NOTICE

1. PARTICULARS THESE PARTICULARS ARE NOT AN OFFER OR A CONTRACT, NOT PART OF CASE.
2. PHOTOS ETC. THE PHOTOGRAPHS SHOW ONLY CERTAIN PARTS OF THE PROPERTY AS THEY APPEARED AT THE TIME THEY WERE TAKEN. AREAS, MEASUREMENTS AND DISTANCES GIVEN ARE APPROXIMATE ONLY.
3. REGULATIONS ETC. ANY REFERENCES TO ALTERATIONS TO, OR USE OF ANY PART OF THE PROPERTY DOES NOT MEAN THAT ANY NECESSARY PLANNING, BUILDING REGULATIONS OR OTHER CONSENT HAS BEEN OBTAINED. A BUYER MUST FIND OUT BY INSPECTION OR IN OTHER WAYS THAT THESE MATTERS HAVE BEEN PROPERLY DEALT WITH AND THAT ALL INFORMATION IS CORRECT.

THESE PLANS ARE FOR GUIDANCE ONLY AND MUST NOT BE RELIED UPON AS STATEMENT OF FACT. PLANS ARE NOT TO SCALE.



GINGERLILY UPPER FLOOR PLAN

#### FIXTURES AND FITTINGS

Fully furnished as show home, all bespoke furniture and fittings included in the sale. The interior design has been architecturally created to maximise the wonderful light in the property and reflect the warm vibrant Caribbean culture.



*Baie de Sucre*

FOR FURTHER INFORMATION CONTACT  
OUR SELECTED AGENTS -

Or

**Baie de Sucre Sales**

Email: [info@baidesucre.com](mailto:info@baidesucre.com)

*All viewings are strictly by appointment only through selected agents or Baie de Sucre Sales Management.*

*We have interviewed our selected property agents for the Baie de Sucre development and would welcome your comments and feedback on the service you have received.*